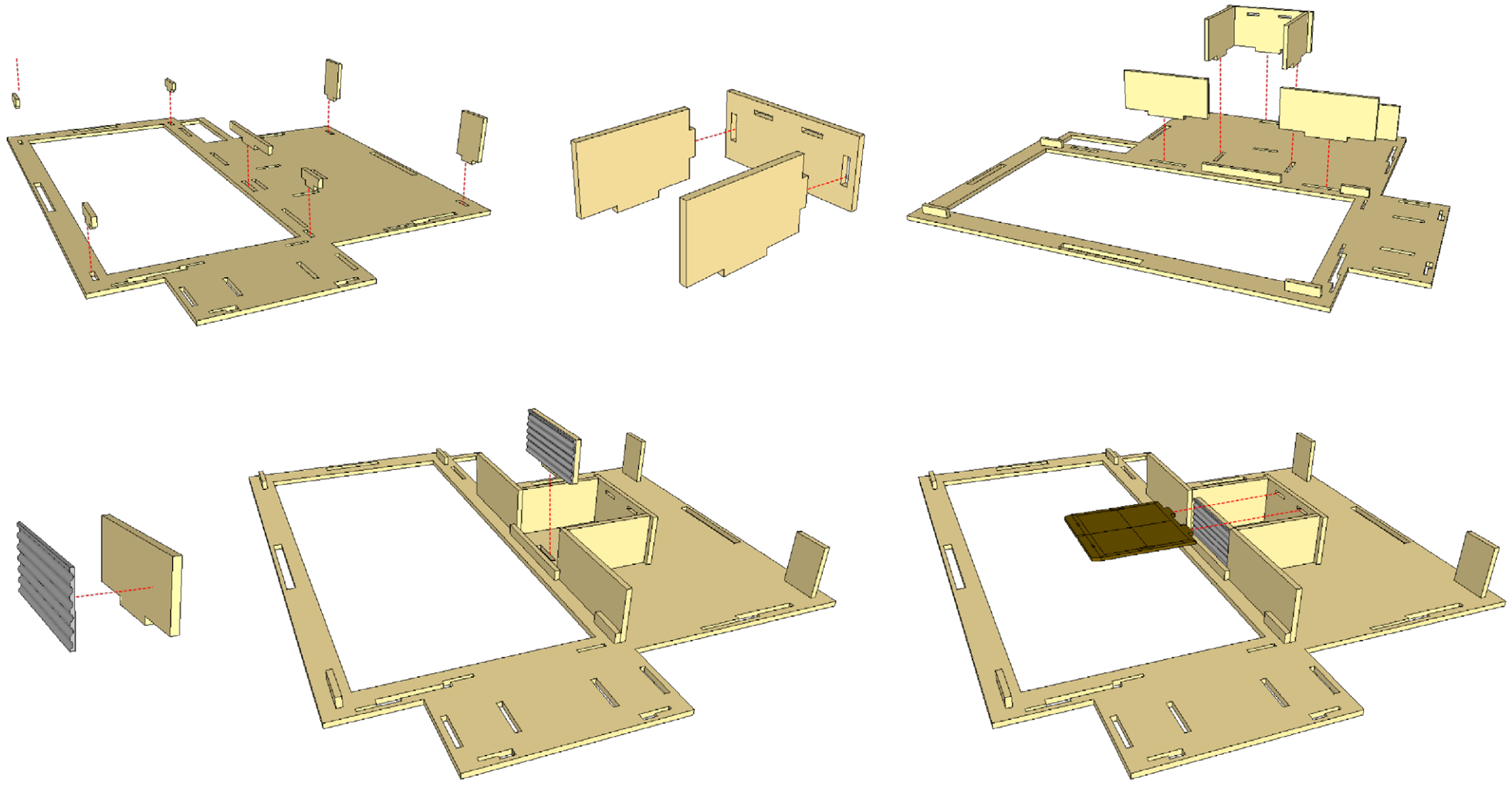
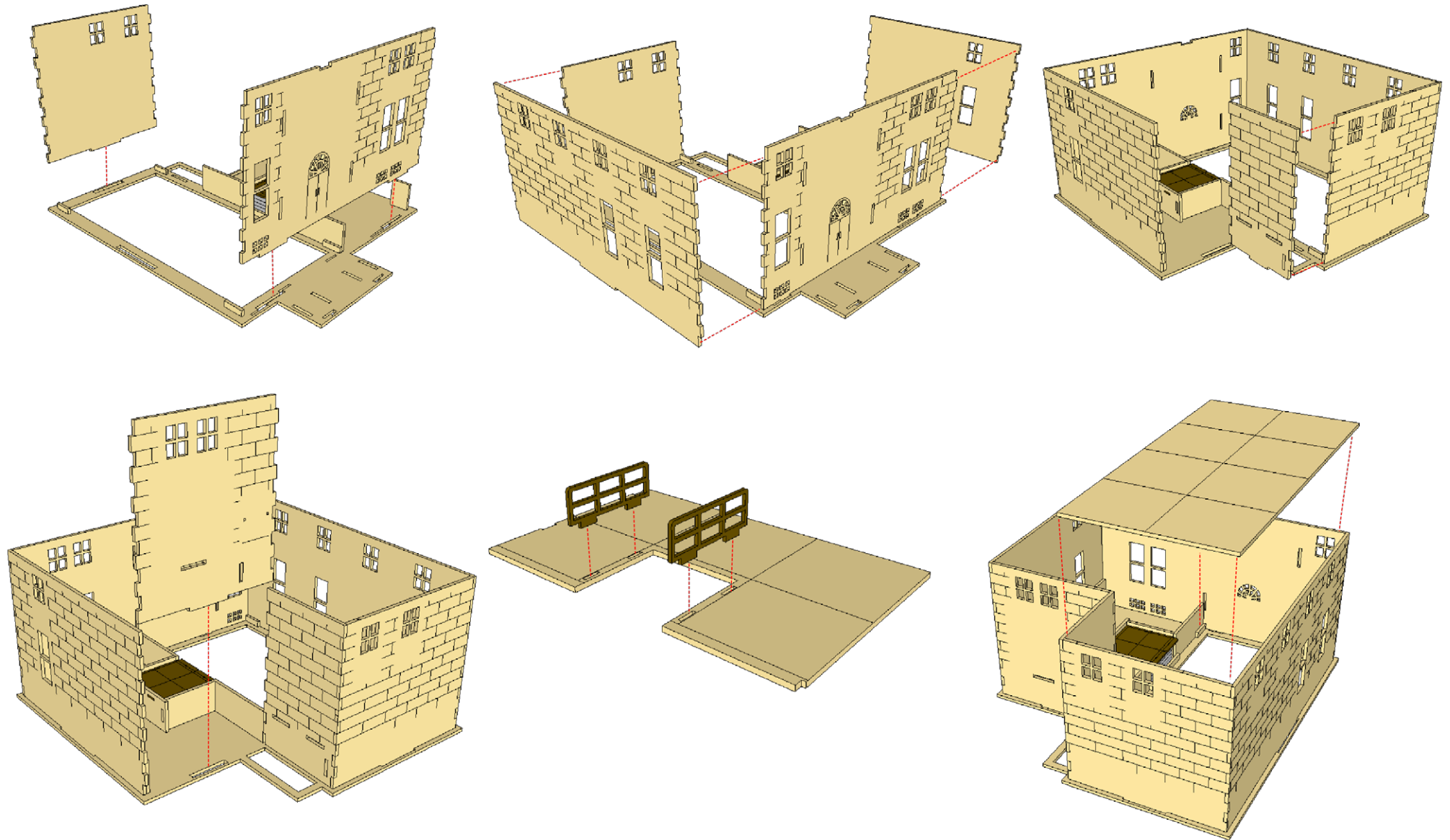


BREYFOGLE LOGISTIC INSTRUCTIONS

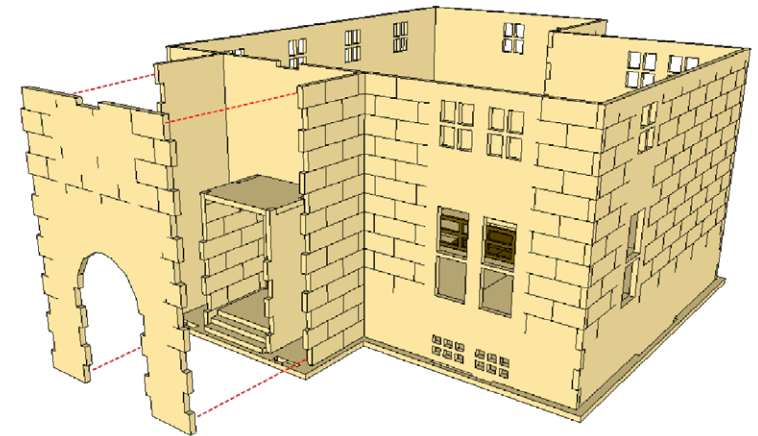
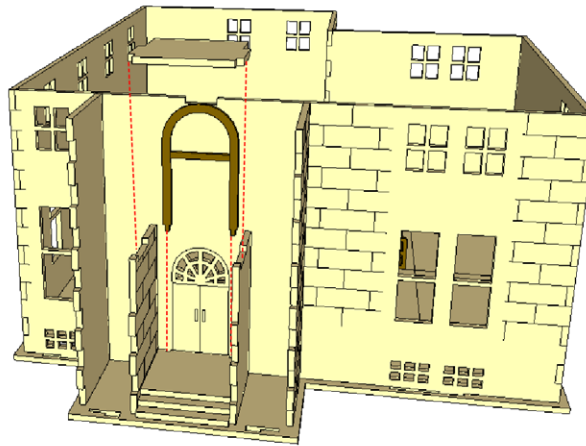
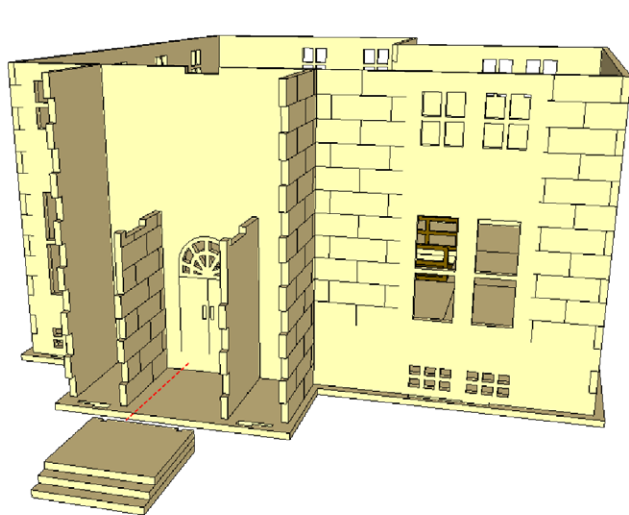
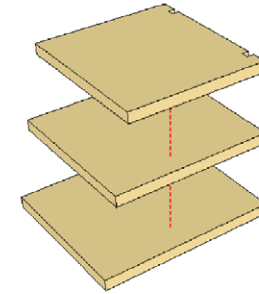
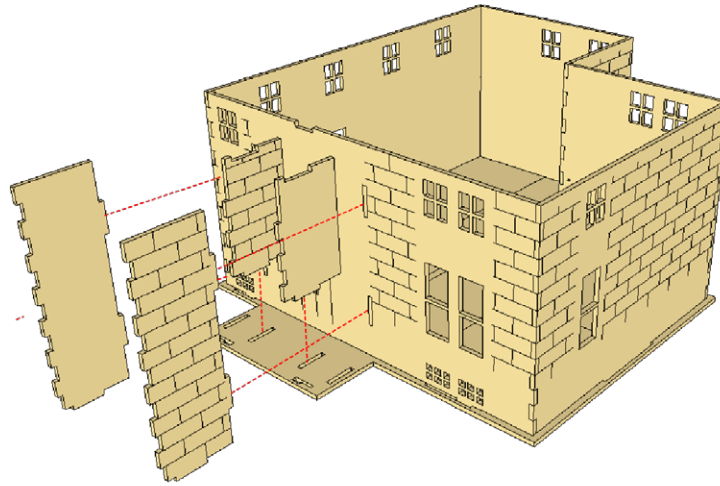
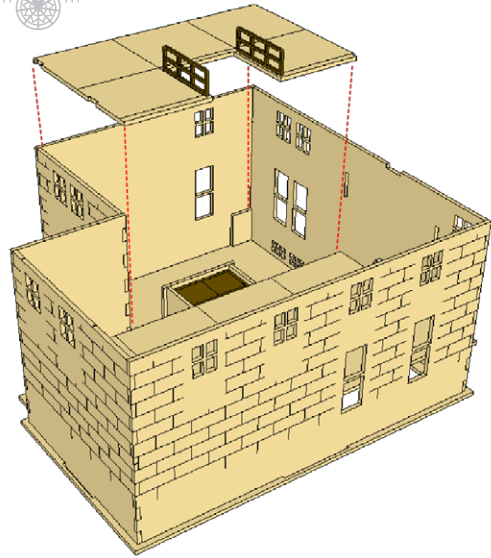
This kit contains card parts.
These need to be carefully
trimmed out of their frame
with a hobby knife



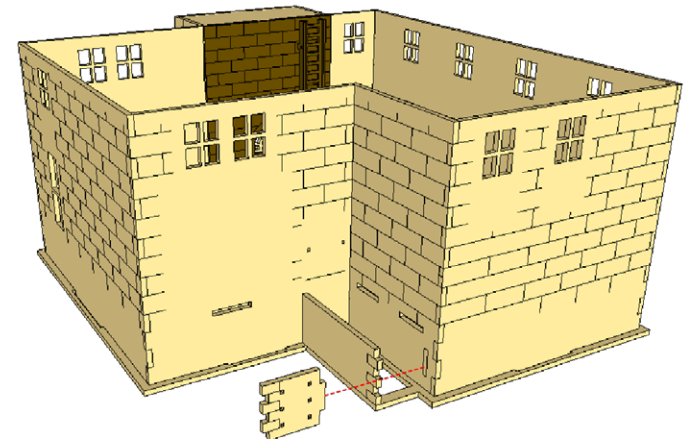
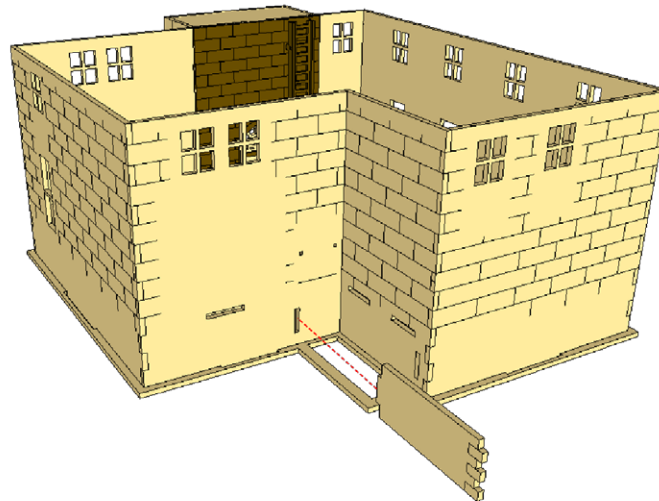
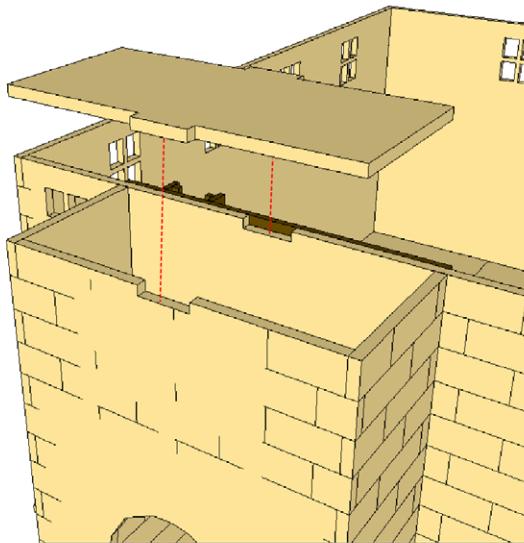
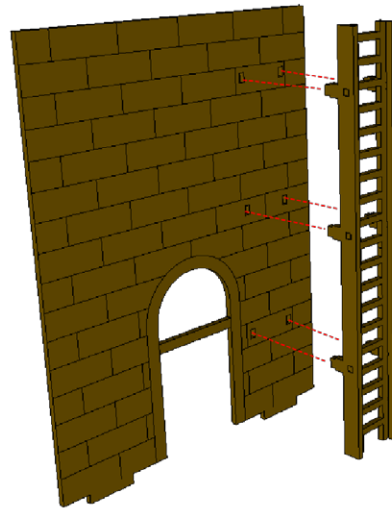
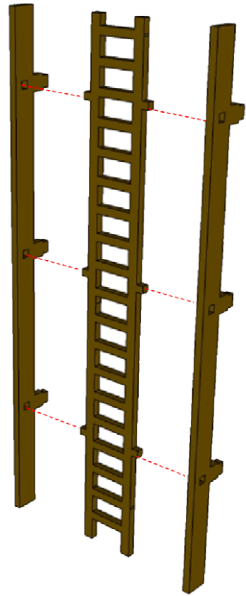
BREYFOGLE LOGISTIC INSTRUCTIONS



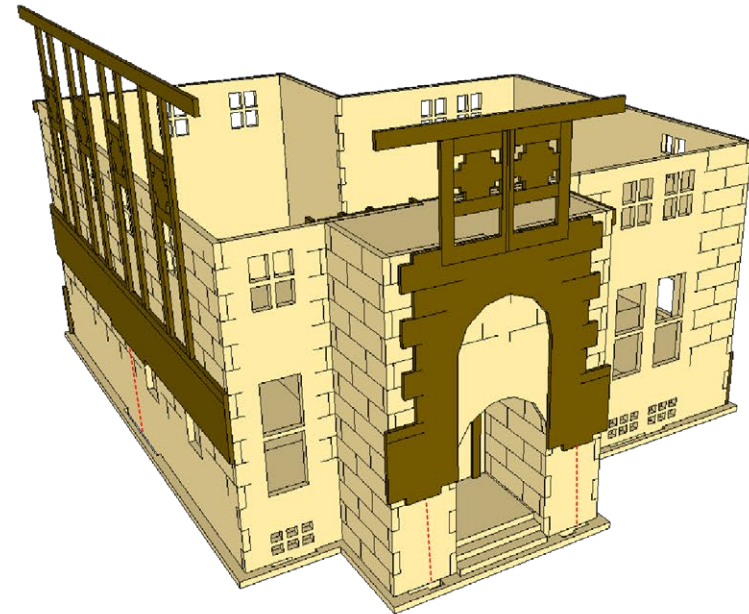
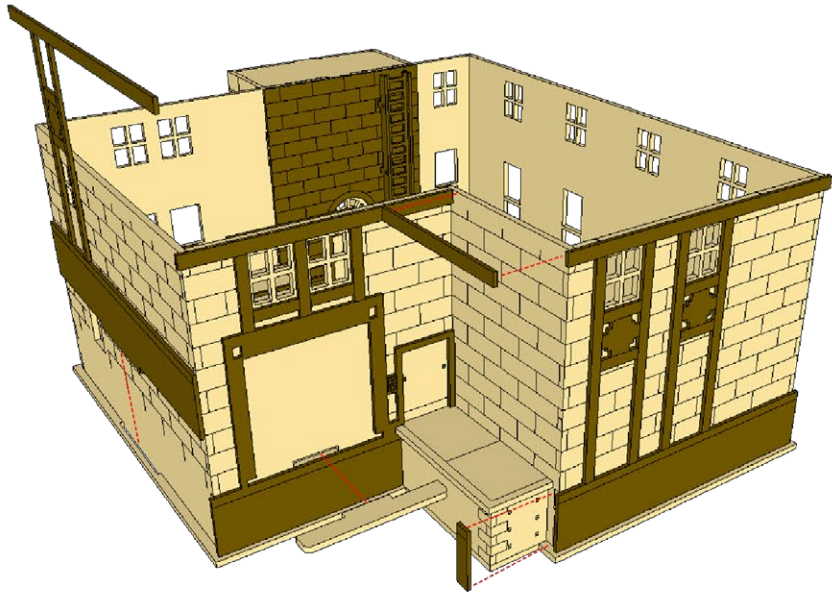
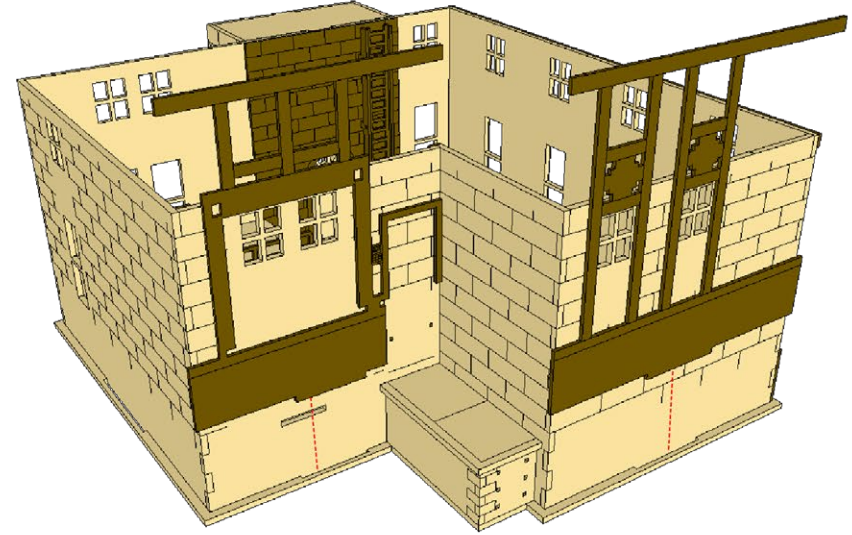
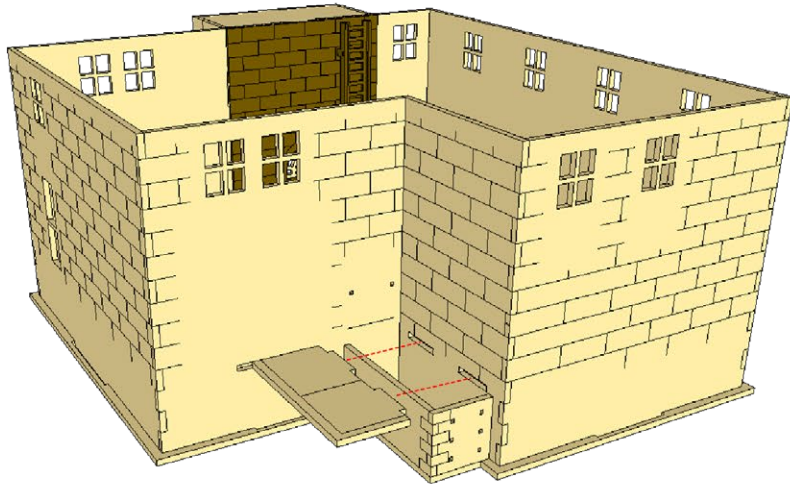
BREYFOGLE LOGISTIC INSTRUCTIONS



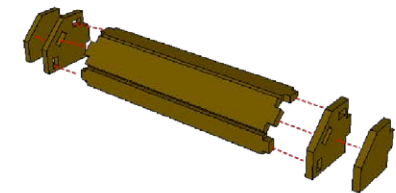
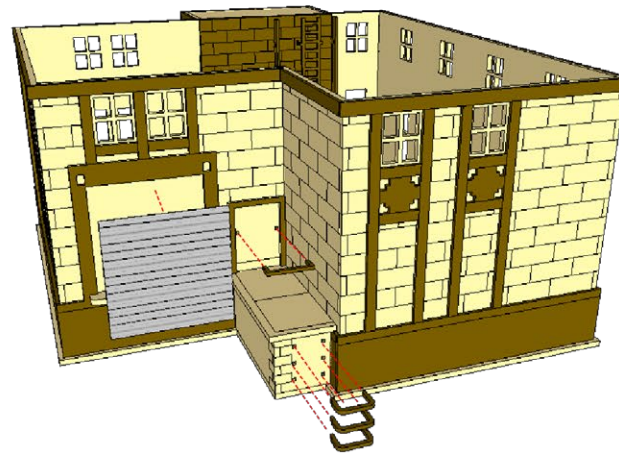
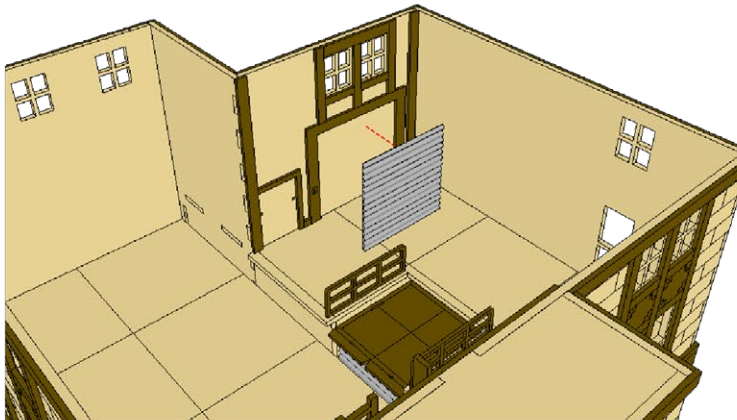
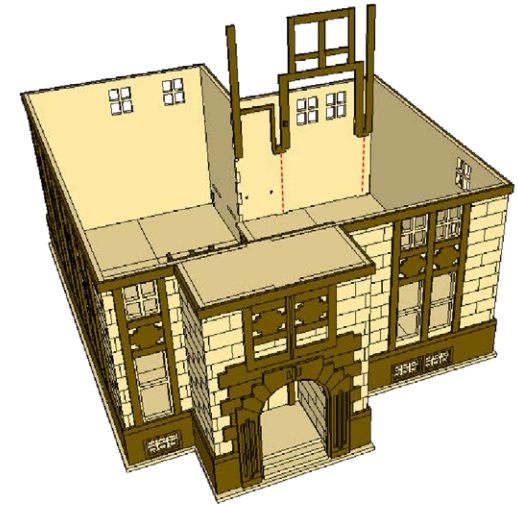
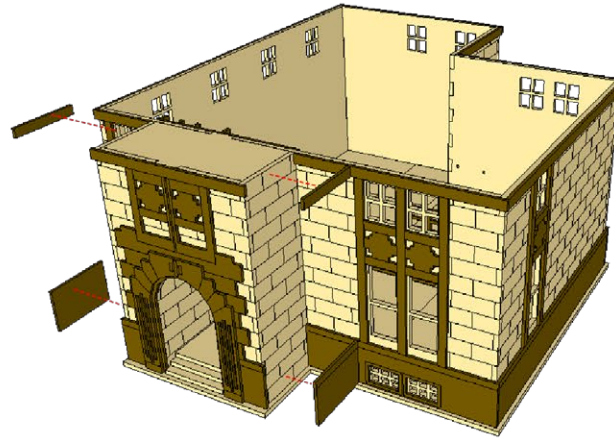
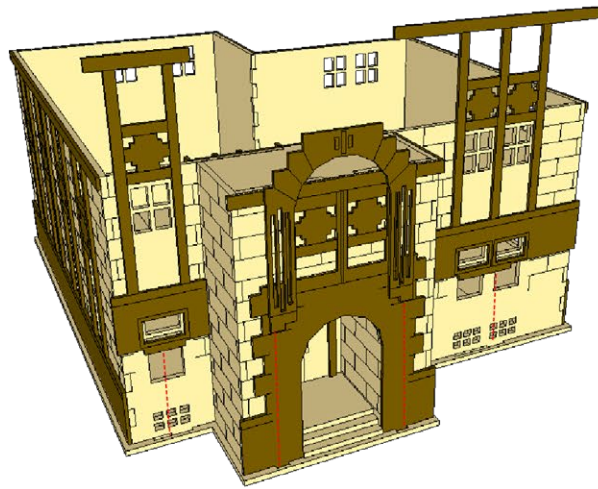
BREYFOGLE LOGISTIC INSTRUCTIONS



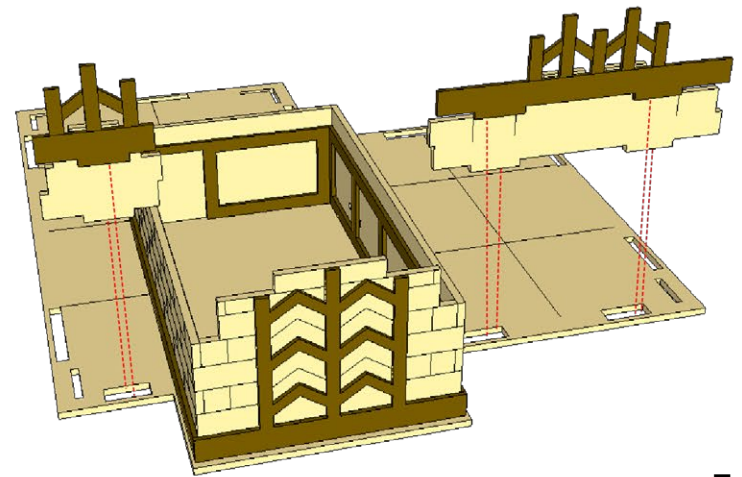
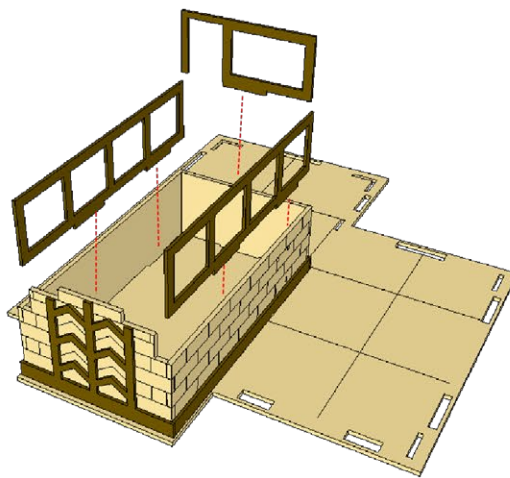
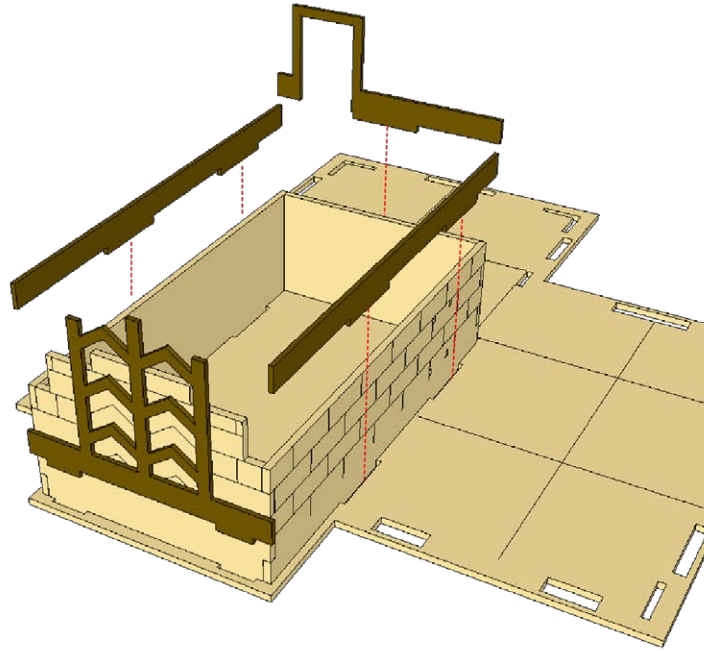
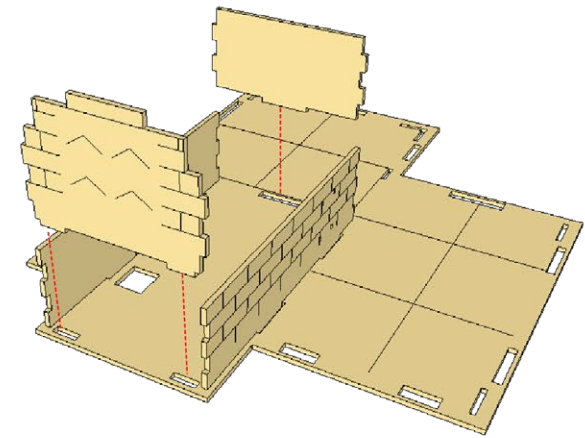
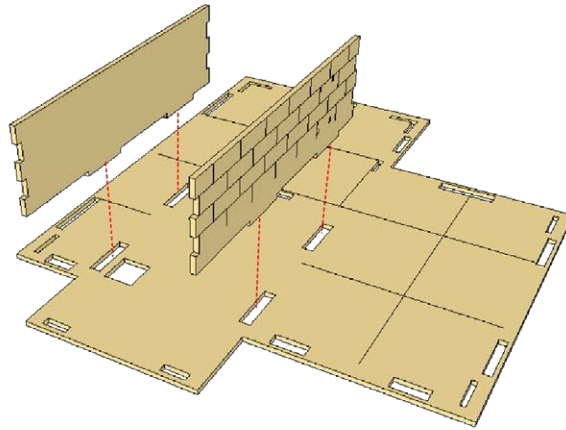
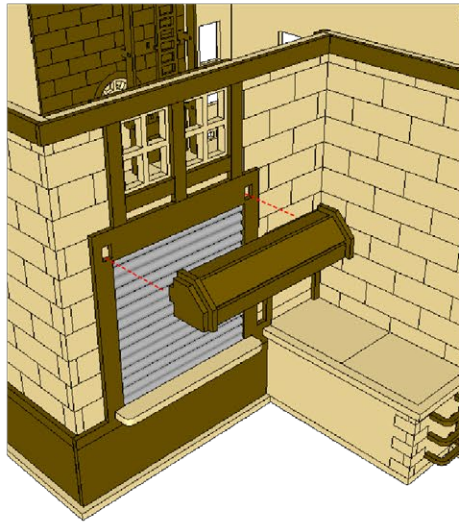
BREYFOGLE LOGISTIC INSTRUCTIONS



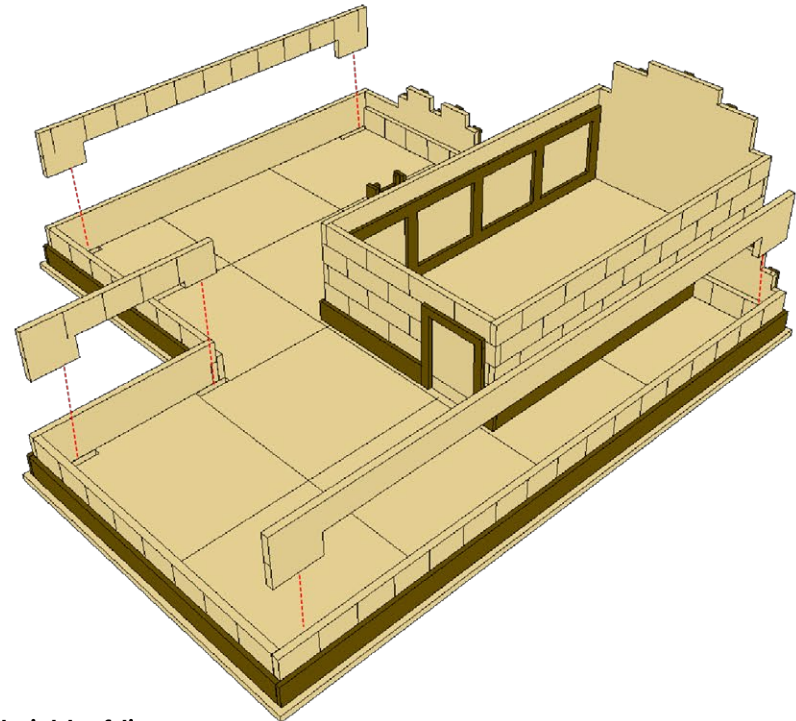
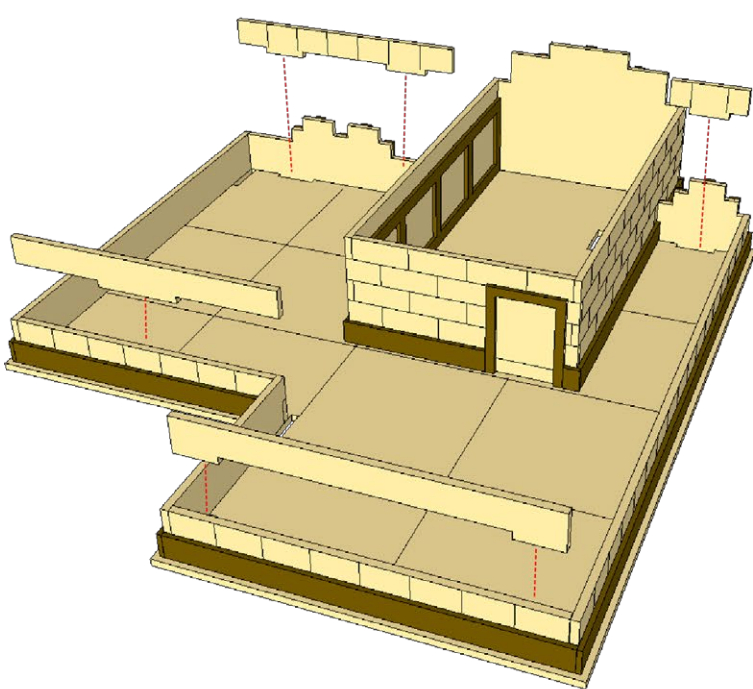
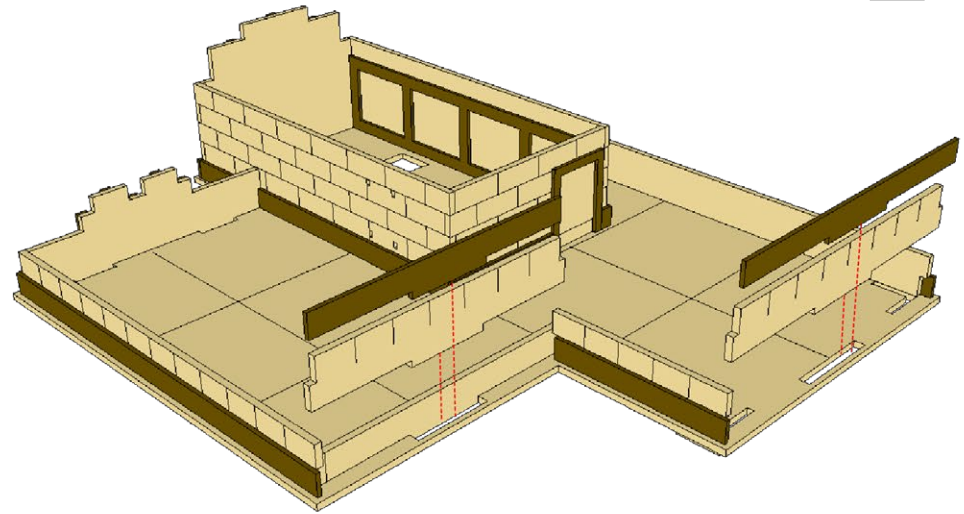
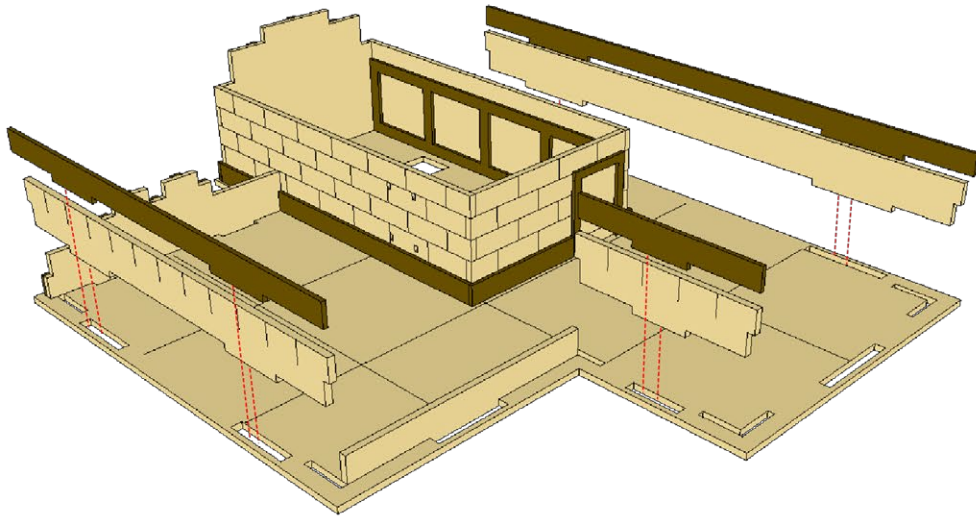
BREYFOGLE LOGISTIC INSTRUCTIONS



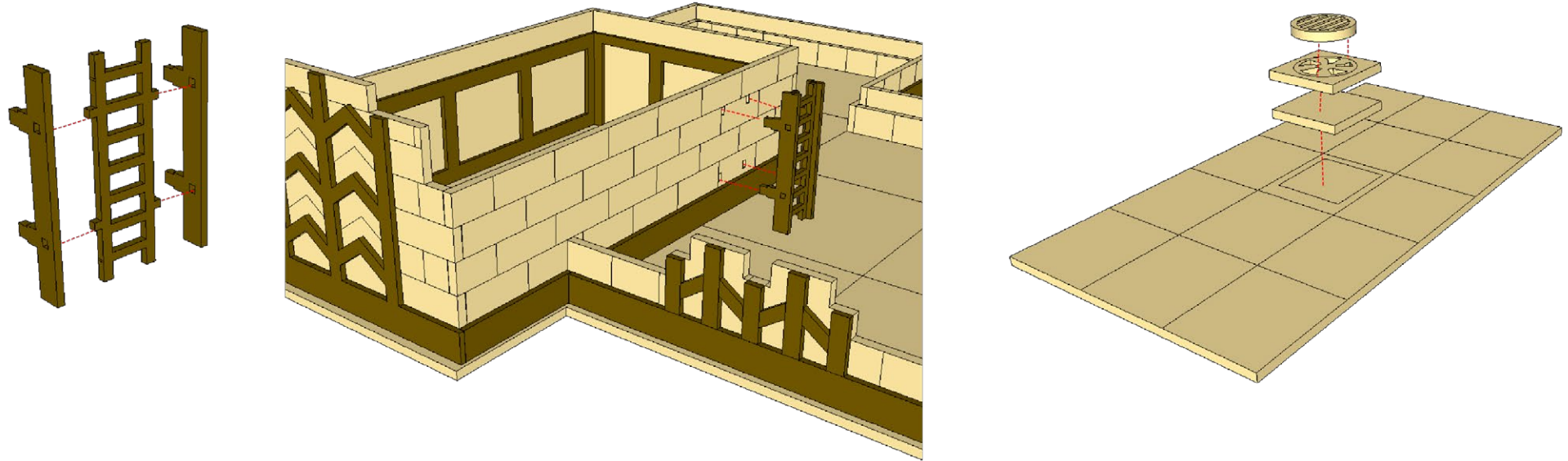
BREYFOGLE LOGISTIC INSTRUCTIONS



BREYFOGLE LOGISTIC INSTRUCTIONS



BREYFOGLE LOGISTIC INSTRUCTIONS



This roofs are designed to be dropped in but not glued to allow interior access

