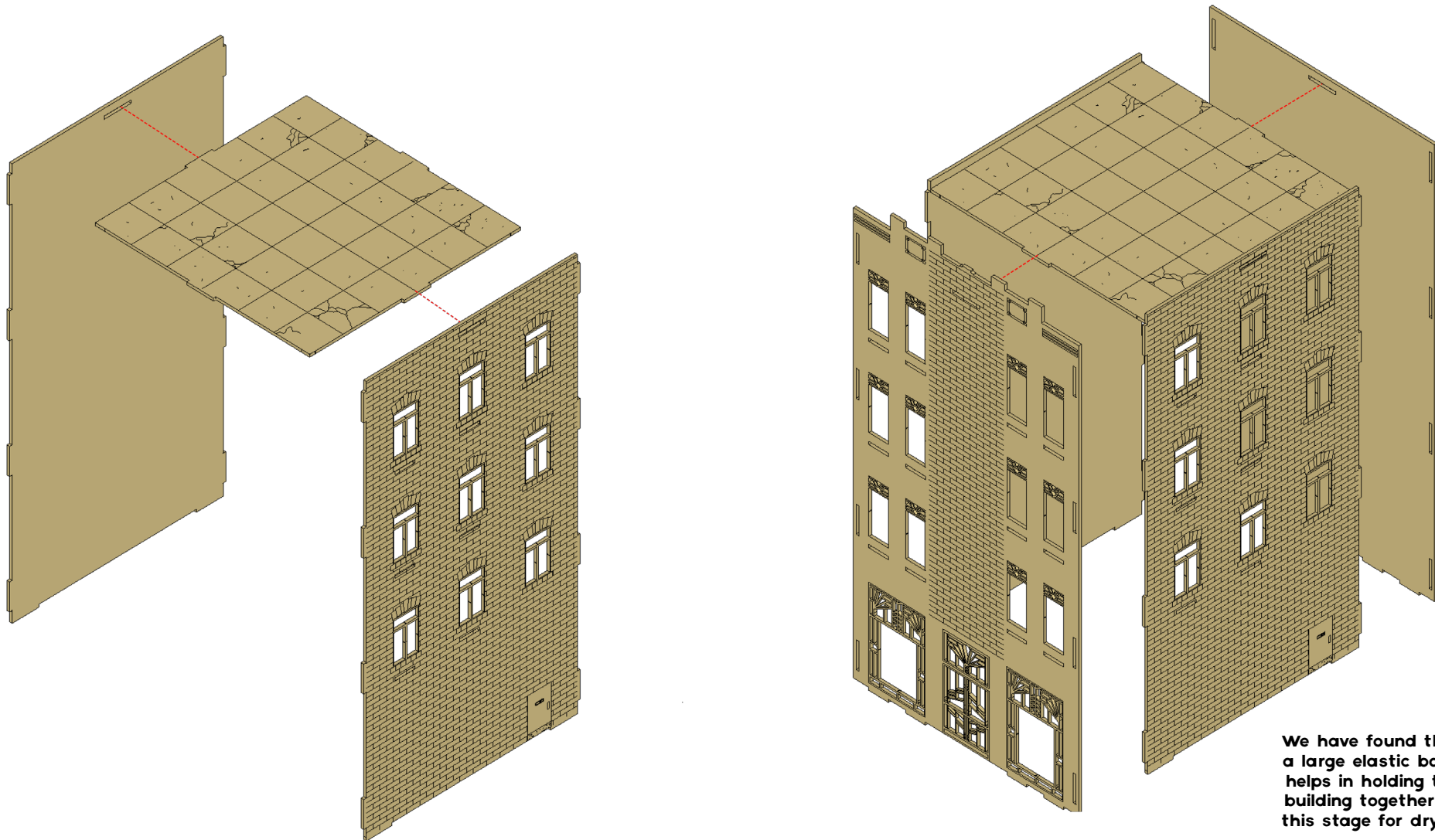


MILLERS TOWER ASSEMBLY INSTRUCTIONS

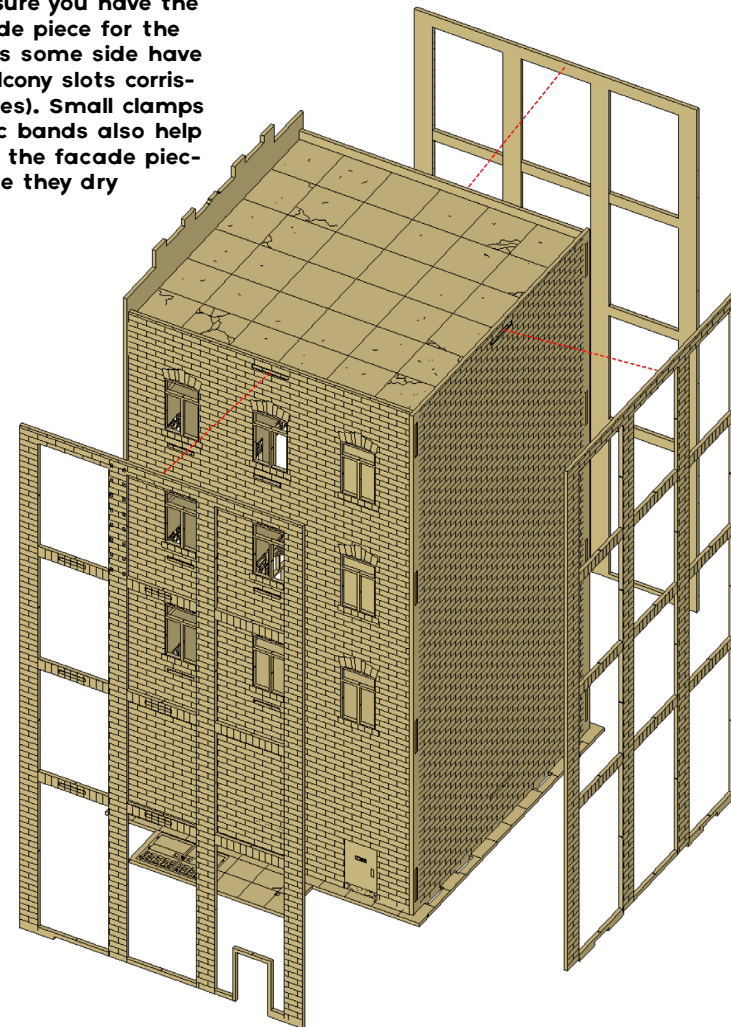
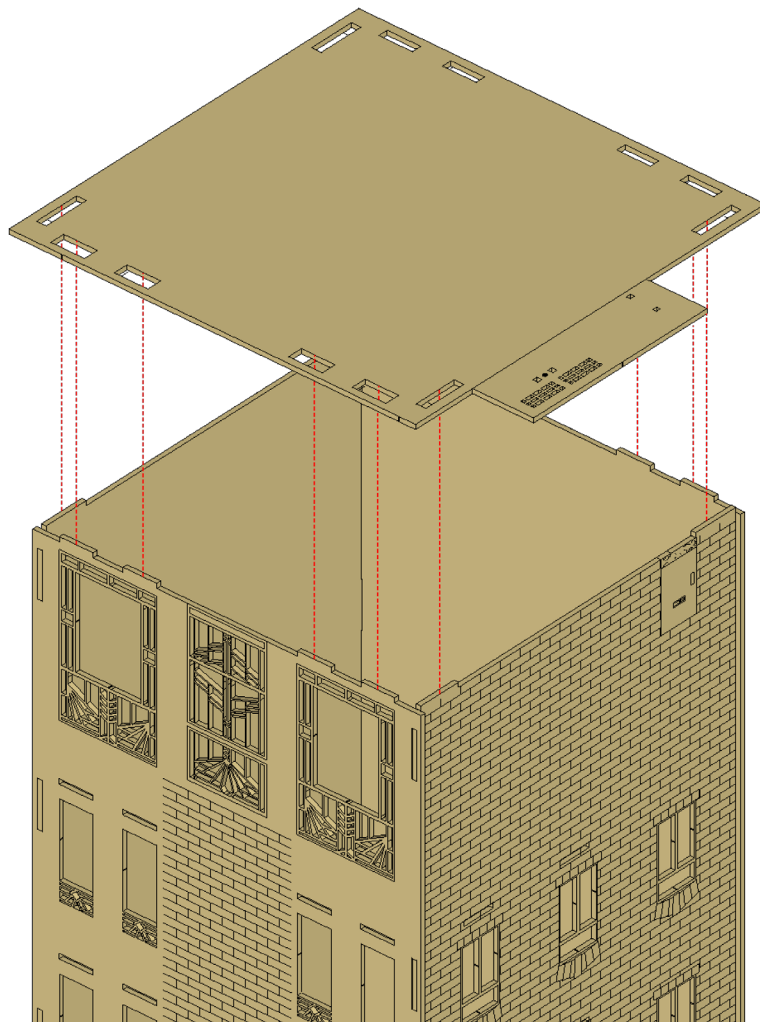


We have found that a large elastic band helps in holding the building together at this stage for drying

MILLERS TOWER ASSEMBLY INSTRUCTIONS

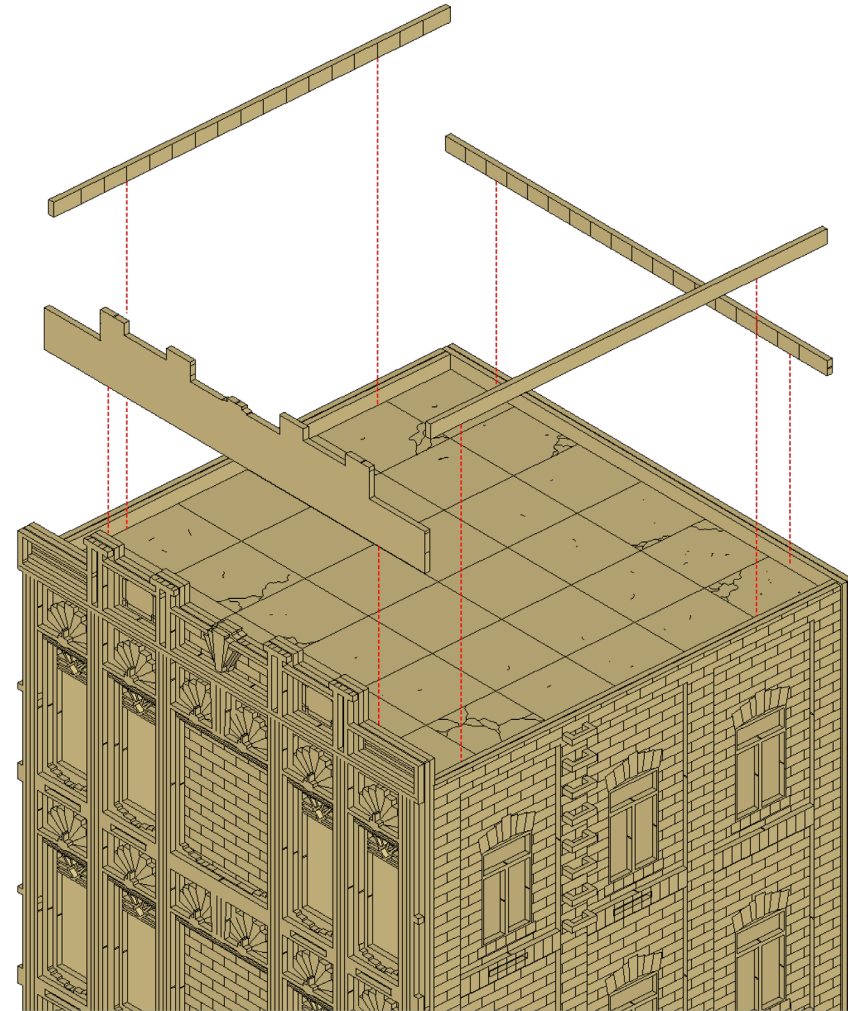
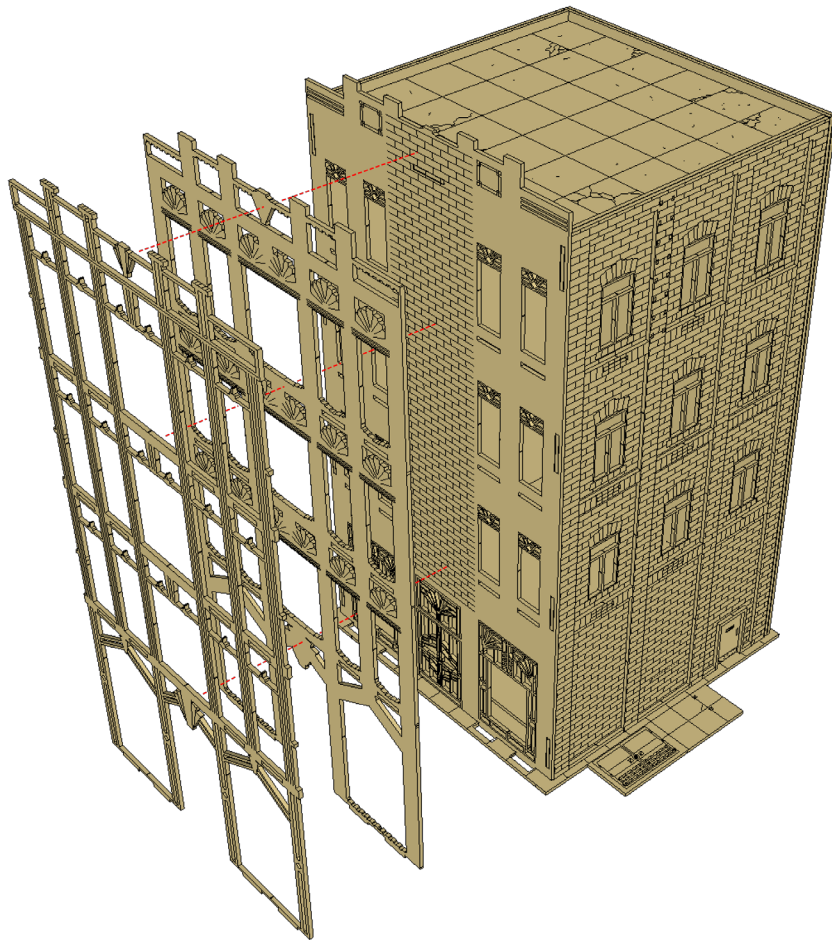
If you wish to place a backing material behind your windows (a good suggestion that we have used is reflective foil card, available from art and stationary stores), do not glue the base in place at this time, wait until after painting the main building. You will still need to slot the base in place to assist with the gluing of the facade pieces however.

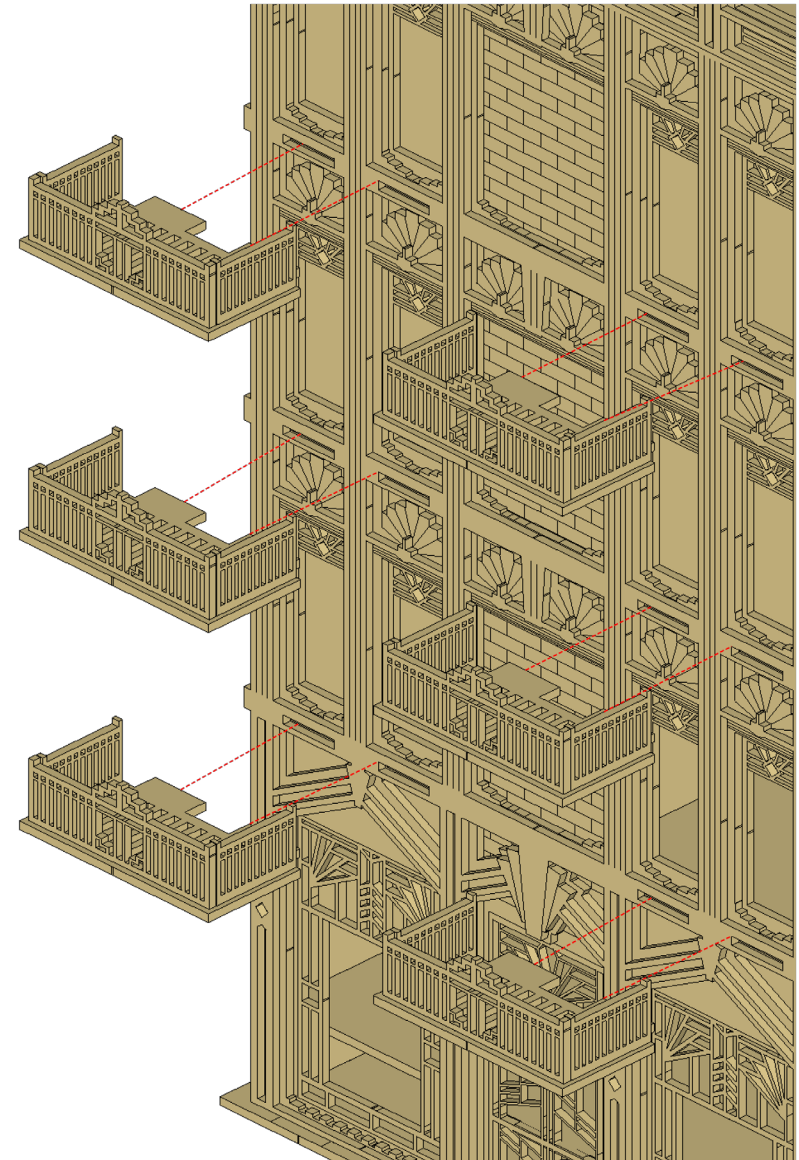
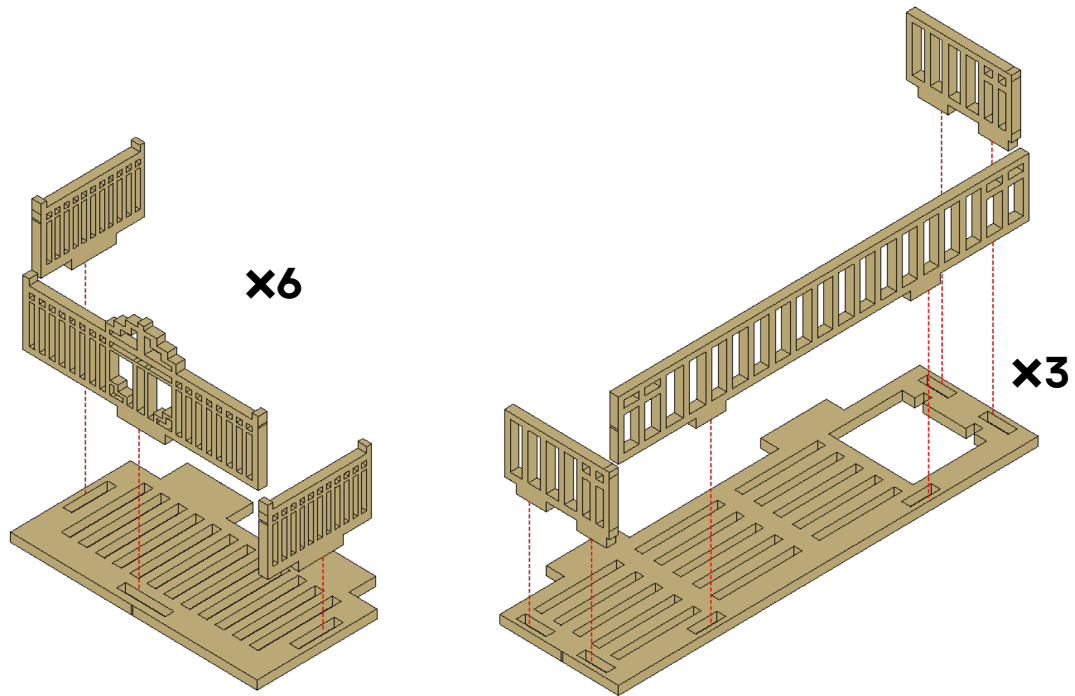
We've found it useful to Apply glue to the facade pieces, then slot them into the holes on the base piece. Its very important to make sure you have the correct facade piece for the correct side (as some side have doors and balcony slots corresponding facades). Small clamps or large elastic bands also help with securing the facade pieces while they dry



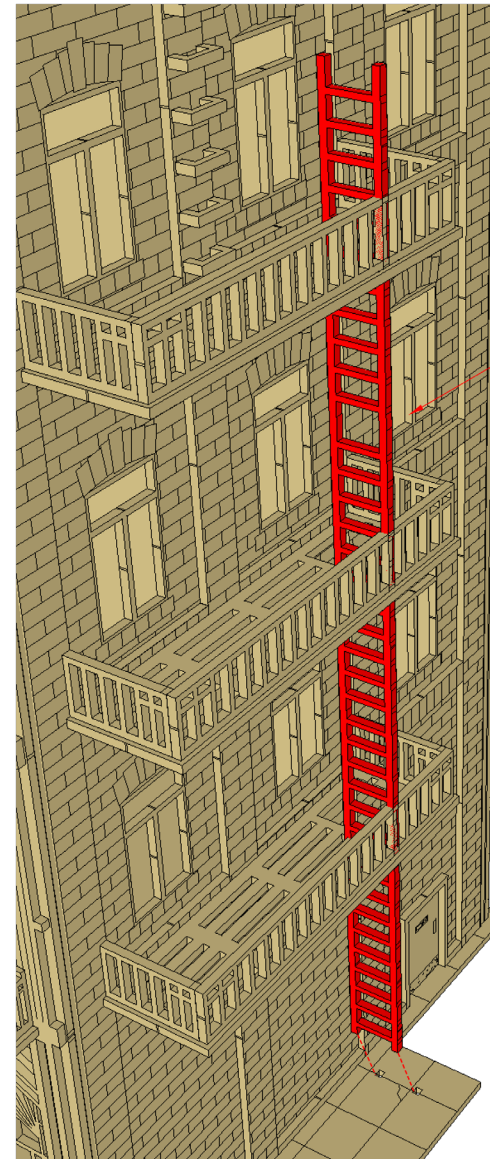
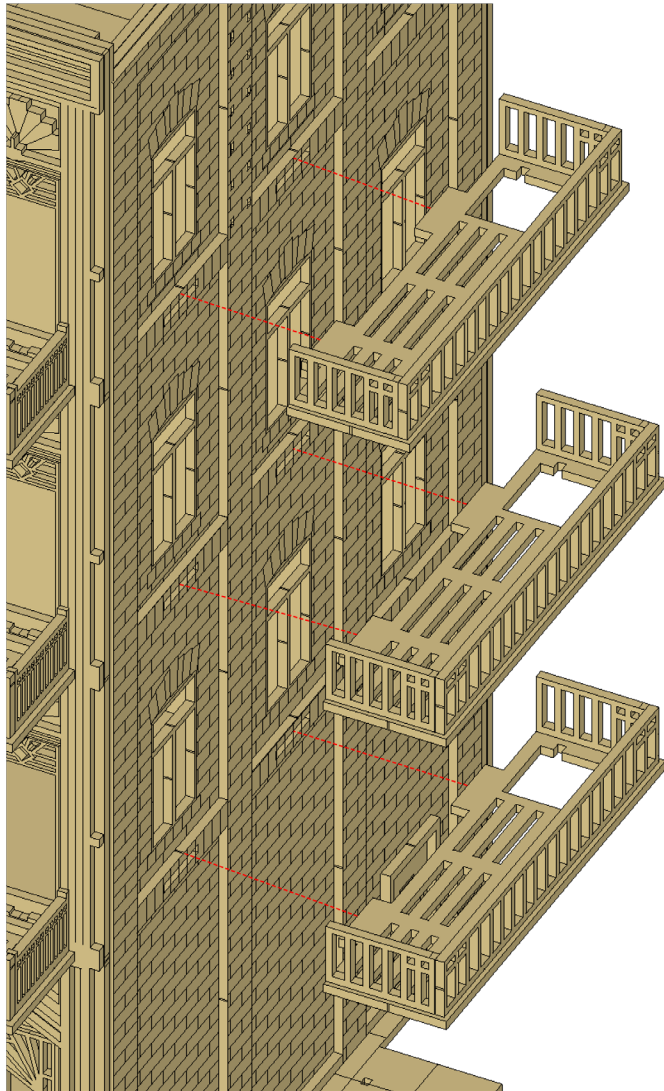
MILLERS TOWER ASSEMBLY INSTRUCTIONS

Find the longest piece of roof trim, this piece goes to the back of the building





MILLERS TOWER ASSEMBLY INSTRUCTIONS



• LARGE RUNG

The ladder only goes in one way: you'll notice that the gaps between one of the rungs is larger than the others, this rung should be positioned toward the top of the ladder. Make sure to dry fit the ladder first to make sure you have the orientation right

MILLERS TOWER ASSEMBLY INSTRUCTIONS

